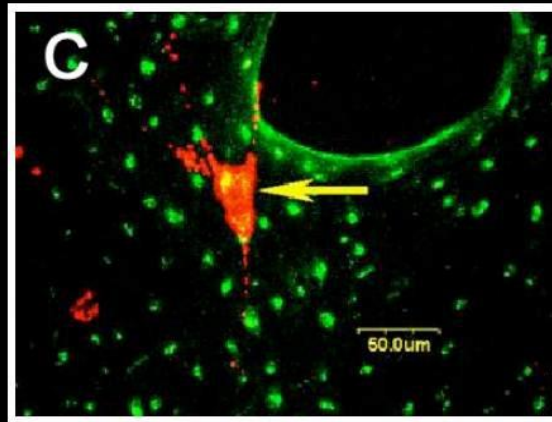
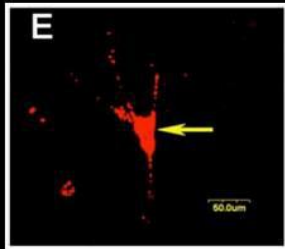
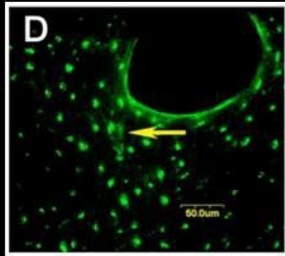




# Assertion-Evidence Slide Template for Scientific Presentations

**Direct intercellular contacts (gap junctions and hemi-channels) enable signaling between OCYs and OBs.**



BB |

[Chan, ME et. al, 2009]

**Melissa Marshall's  
recommended slide  
design strategy.**



**See her talk on [Learn Research](#).  
Visit [PresentYourScience.com](#) for  
additional information.**

Credit: Slide design researched and developed by Michael Alley at Penn State University.  
Published in [The Craft of Scientific Presentations](#) (2<sup>nd</sup> Ed., 2013.)

**In an assertion-evidence slide, the headline is a sentence, no more than two lines, that states the slide's message**

**Supporting photo, drawing, diagram, video, or graph—no bulleted lists**

**Call-outs, if needed:  
no more than two lines**